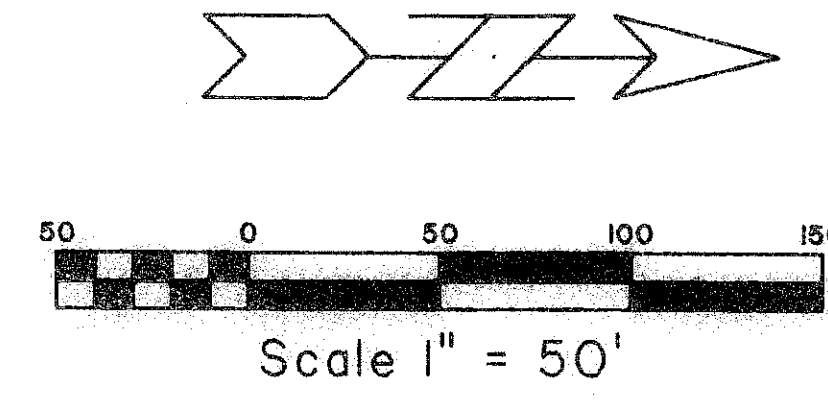
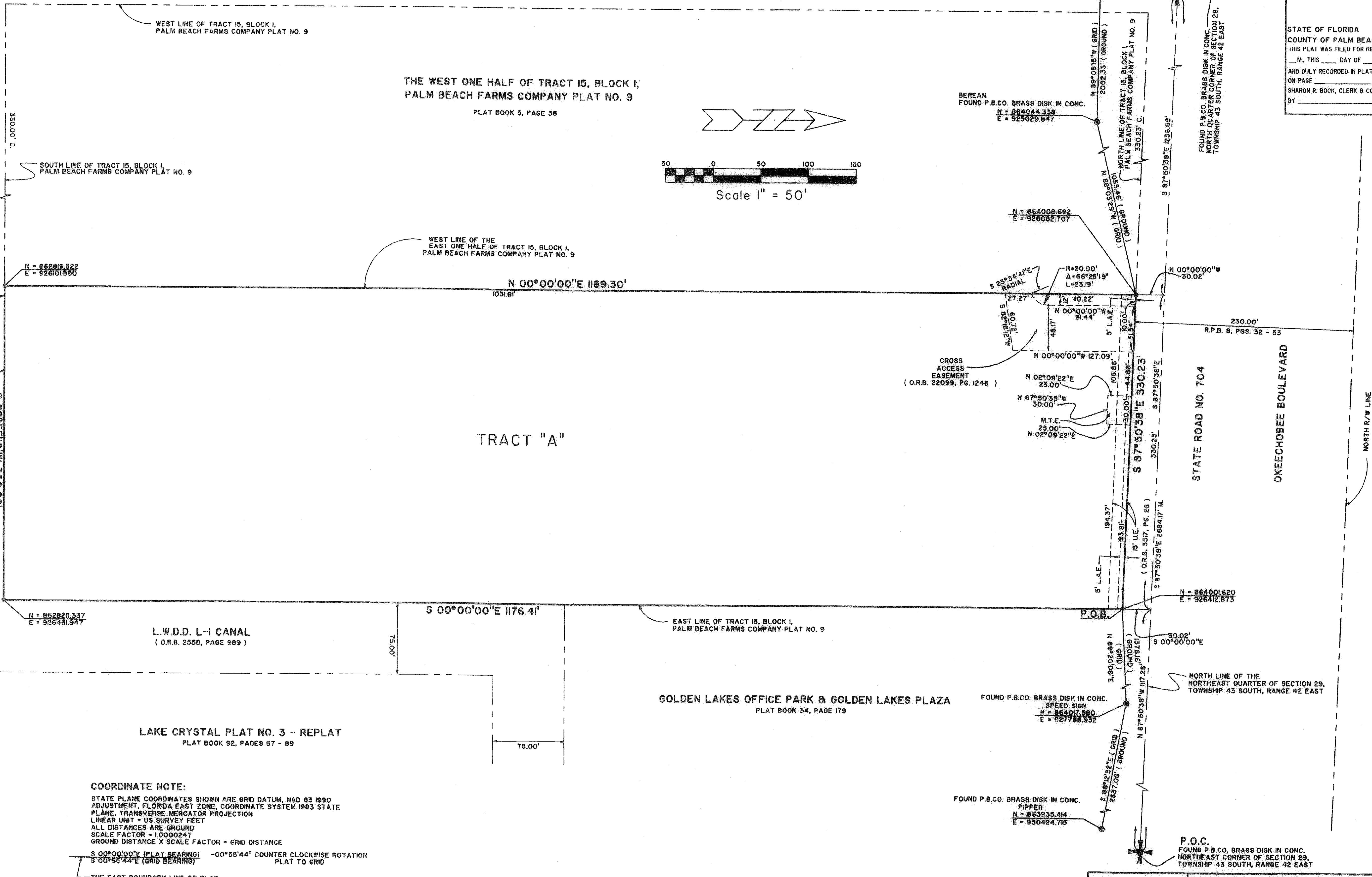


# BELLA VITA ESTATES

BEING A REPLAT OF THE EAST HALF OF TRACT 15, BLOCK 1, PALM BEACH FARMS COMPANY PLAT NO. 9, AS RECORDED IN PLAT BOOK 5, PAGE 58, PUBLIC RECORDS OF PALM BEACH COUNTY, FLORIDA AND LYING IN SECTION 29, TOWNSHIP 43 SOUTH RANGE 42 EAST, PALM BEACH COUNTY, FLORIDA.  
SHEET 2 OF 2  
JANUARY, 2008

STATE OF FLORIDA SS  
COUNTY OF PALM BEACH  
THIS PLAT WAS FILED FOR RECORD AT  
M., THIS DAY OF 2008  
AND DULY RECORDED IN PLAT BOOK NO.  
ON PAGE  
SHARON R. BOCK, CLERK & COMPTROLLER  
BY D.C.



**COORDINATE NOTE:**  
STATE PLANE COORDINATES SHOWN ARE GRID DATUM, NAD 83 1990 ADJUSTMENT, FLORIDA EAST ZONE, COORDINATE SYSTEM 1983 STATE PLANE, TRANSVERSE MERCATOR PROJECTION  
LINEAR UNIT = US SURVEY FEET  
ALL DISTANCES ARE GROUND  
SCALE FACTOR = 1.0000247  
GROUND DISTANCE X SCALE FACTOR = GRID DISTANCE  
S 00°00'00"E (PLAT BEARING) -00°55'44" COUNTER CLOCKWISE ROTATION PLAT TO GRID  
S 00°55'44"E (GRID BEARING)  
-THE EAST BOUNDARY LINE OF PLAT

**Landmark Surveying & Mapping Inc.**  
1850 Forest Hill Boulevard  
Ph. (561) 433-5405 Suite 100 W.P.B. Florida  
LB # 4396

**BELLA VITA ESTATES**